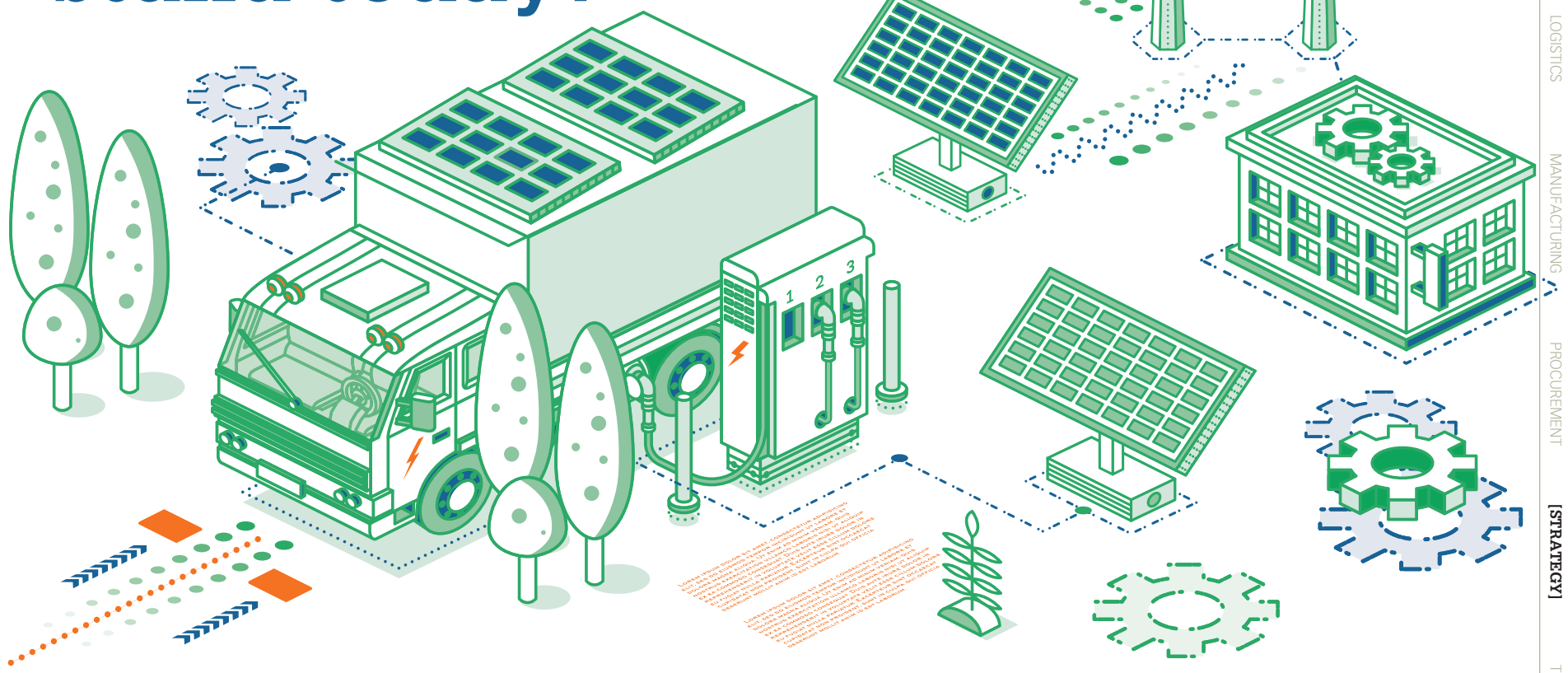


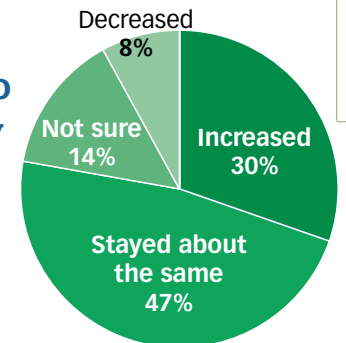
# Where do supply chain sustainability programs stand today?



Companies' ongoing commitment to supply chain sustainability (SCS) has not wavered, but they are feeling the pressure from new sources, which, in turn, may be driving changes in priorities and the metrics they use for managing SCS programs. To find out who's driving that pressure, which aspects of sustainability companies are focusing on, and how they're managing their SCS efforts, the MIT Center for Transportation & Logistics and the Council of Supply Chain Management Professionals recently conducted a survey of 3,300 supply chain professionals. Here's what the study revealed:

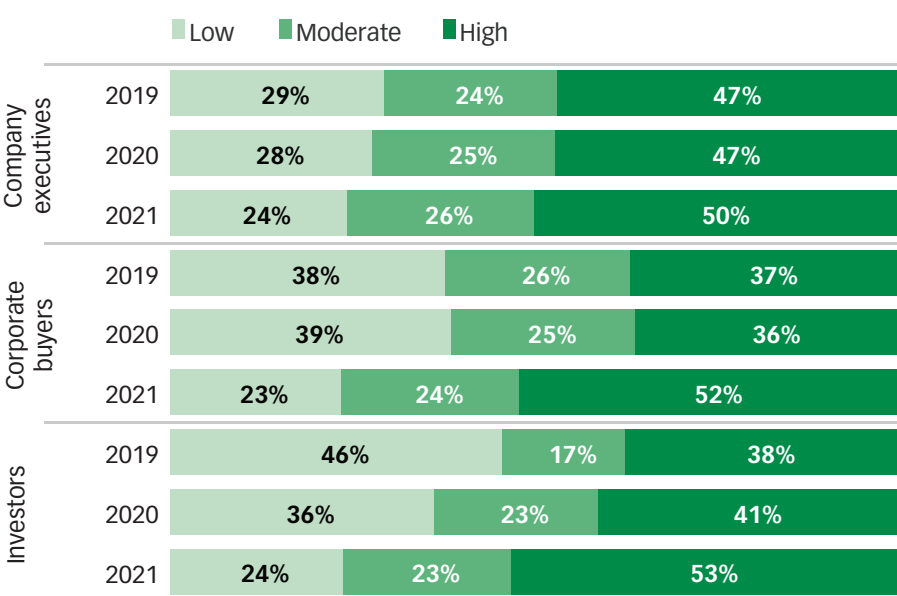
## Companies' commitment to supply chain sustainability

For the second consecutive year, roughly 80% of survey respondents said their company's commitment to supply chain sustainability had remained undiminished by the global pandemic.



## Level of pressure from major stakeholders

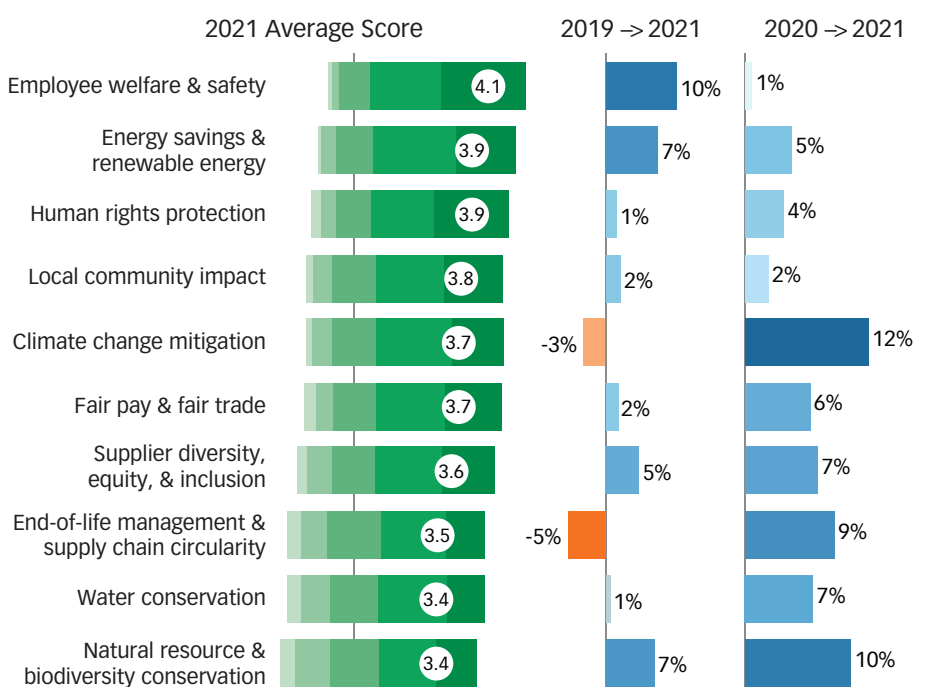
The pressure that respondents reported feeling from company executives and investors increased steadily from 2019 to 2021. By contrast, pressure from corporate buyers remained flat until 2020, when it started to soar.



Low = 1 (No pressure), 2 (A little pressure), Moderate = 3 (Some pressure)  
High = 4 (Moderate pressure), 5 (Intense pressure)

## Respondents' SCS investment priorities

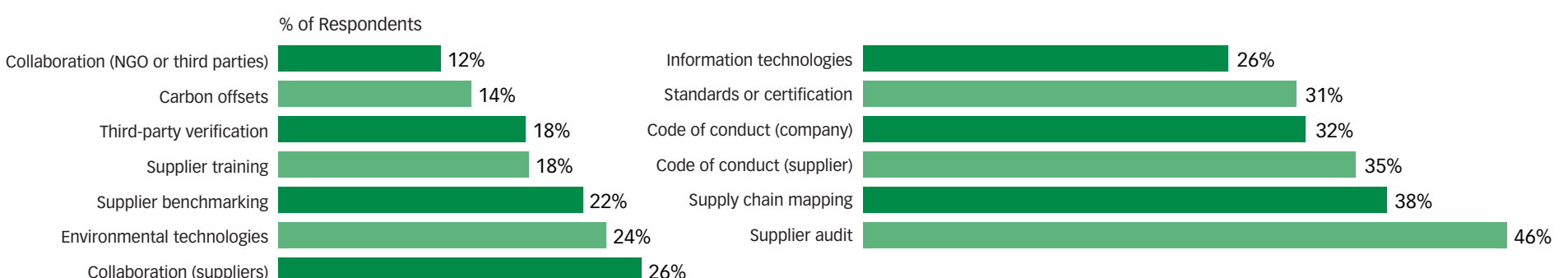
After a slight decline the previous year, respondents' commitment to climate-change mitigation shot up from 2020 to 2021. By contrast, their commitment to initiatives designed to address social issues has steadily increased each year.



1 = Not a priority ... 5 = Very high priority

## Types of practices used to manage SCS efforts

Companies relied most heavily on supplier audit, supply chain mapping, and code-of-conduct programs to manage their SCS efforts in 2021. Forty-six percent of respondents indicated they used supplier audits, making this the most common sustainability management practice reported by study participants.



**ABOUT THE STUDY:** Produced through a partnership between the Massachusetts Institute of Technology's Center for Transportation & Logistics (CTL) and the Council of Supply Chain Management Professionals (CSCMP), the annual *State of Supply Chain Sustainability* report looks at corporate supply chain sustainability efforts and their evolution over time. This year's report was based on a survey of some 3,300 supply chain professionals from around the world that was conducted in late 2021. You can download a copy of the report at <https://sscs.mit.edu>.